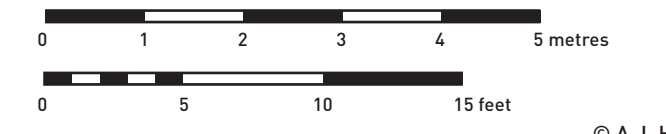
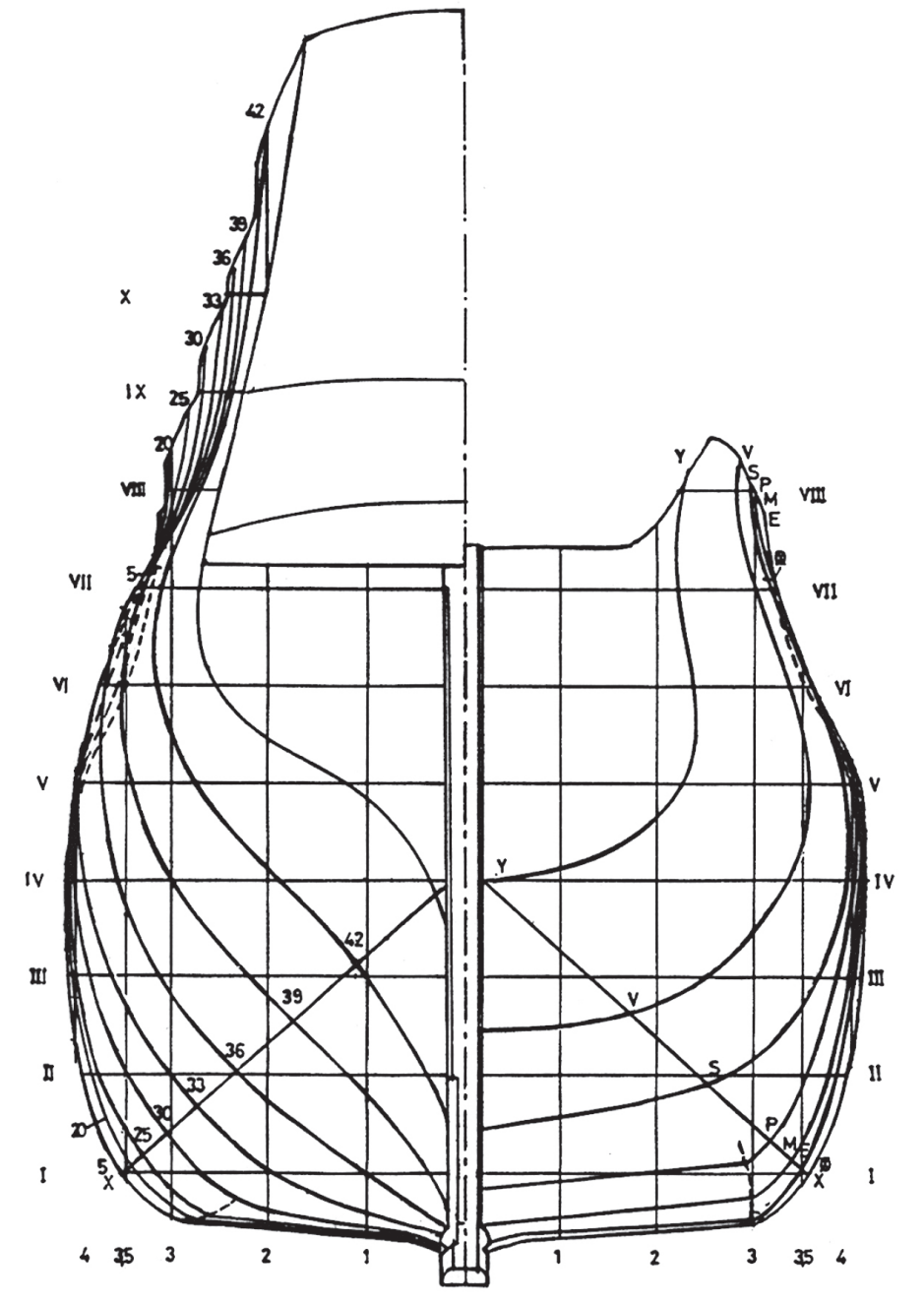
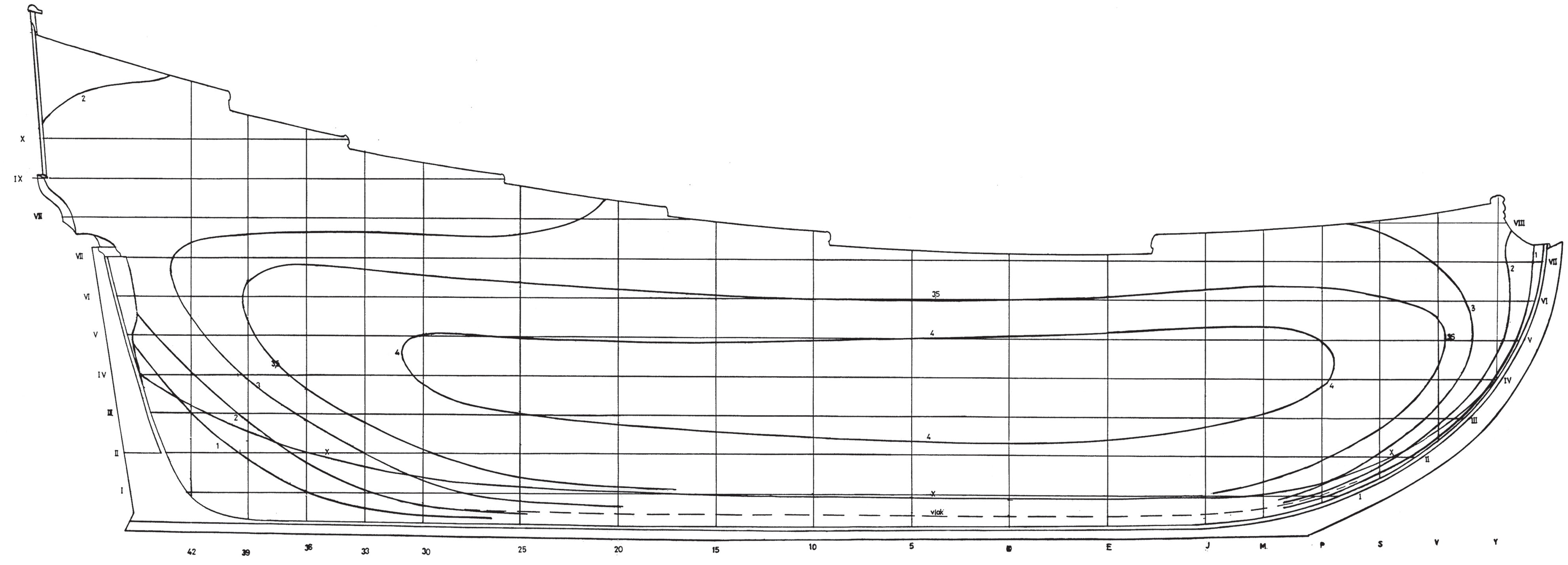
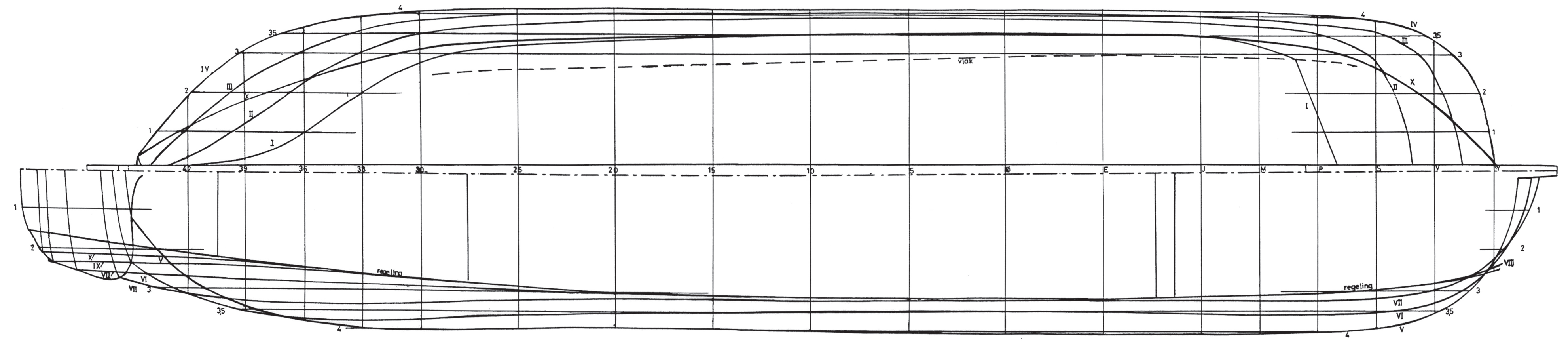


**A 134-foot Ship Drawing I - Lines Plan**

Reconstructed from  
'Aeloude en hedendaegsche Scheepsbouw en Bestier'  
by Nicolaes Witsen, 1671, chapters VII, IX, X, XI, XVII and XIX.



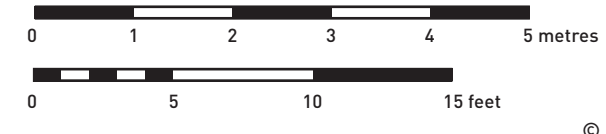
© A.J. Hoving, 1982



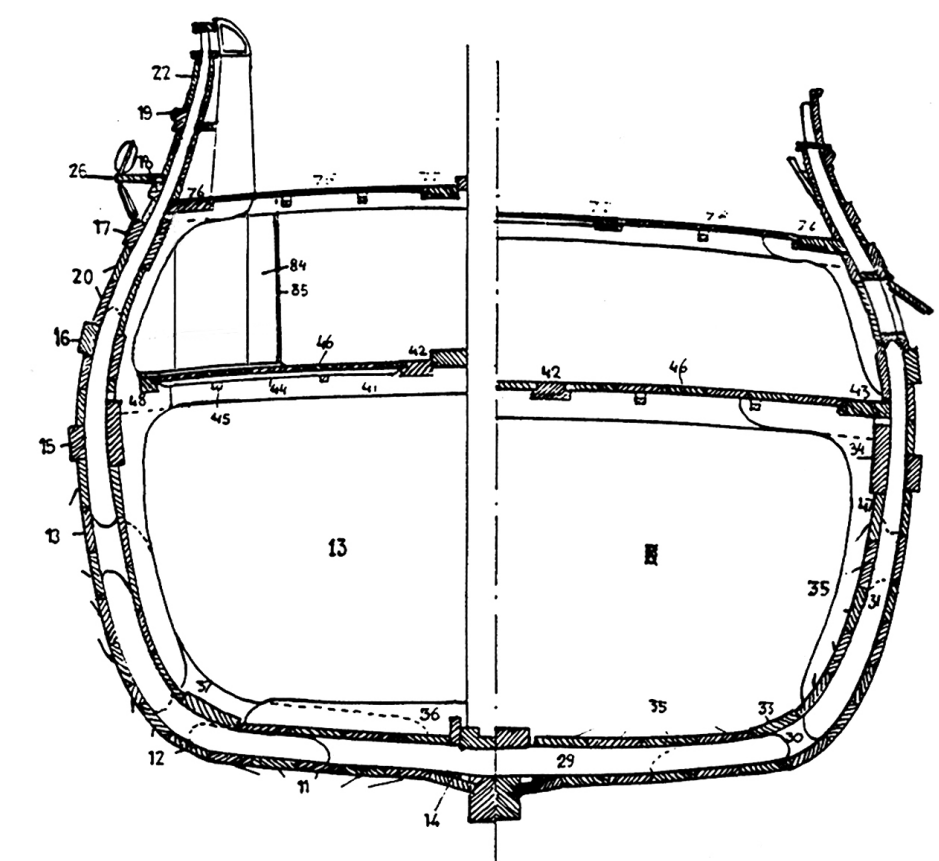
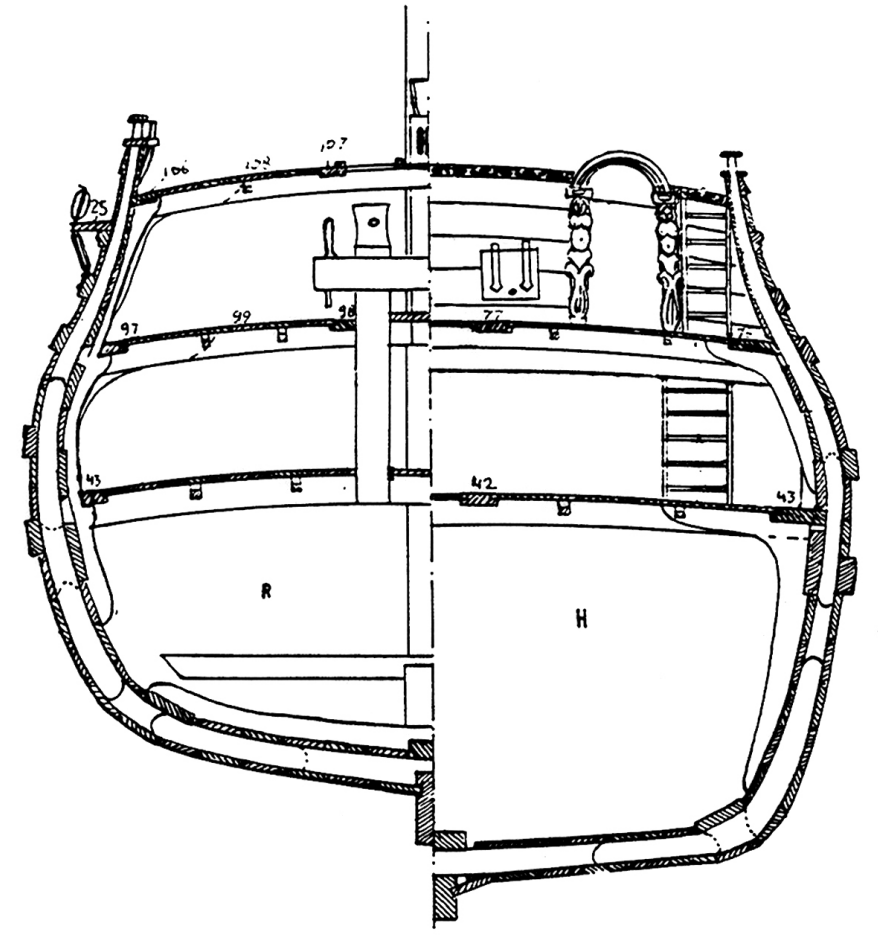
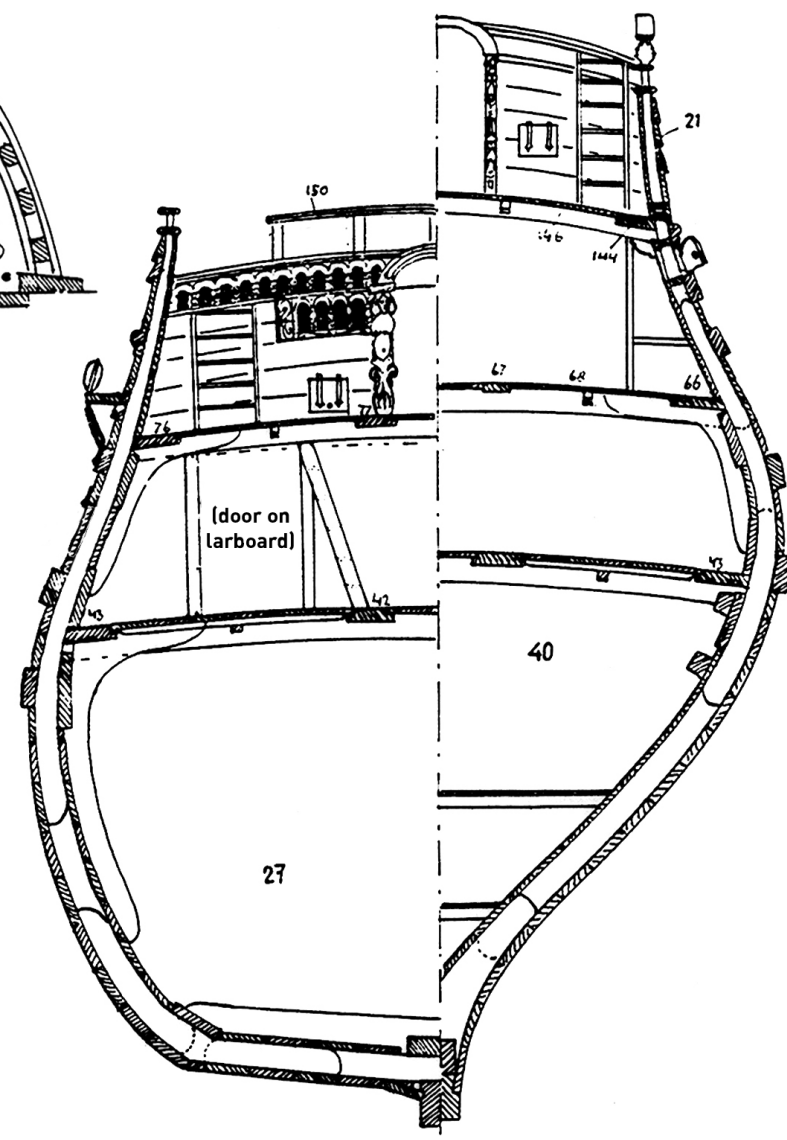
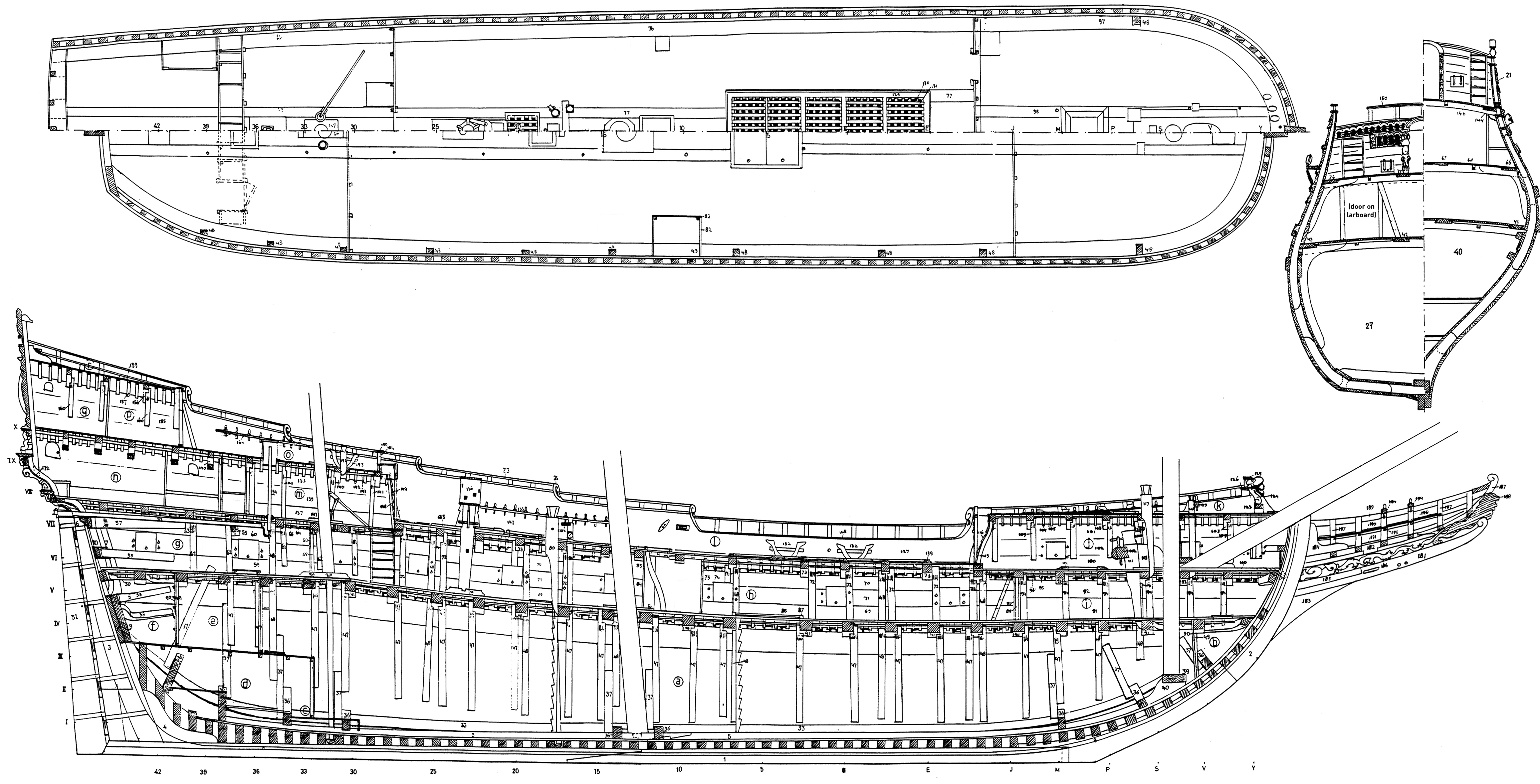


A 134-foot Ship Drawing II - Sections

Reconstructed from  
'Aeloude en hedendaegsche Scheepsbouw en Bestier'  
by Nicolaes Witsen, 1671, chapters VII, IX, X, XI, XVII and XIX.



© A.J. Hoving, 1982

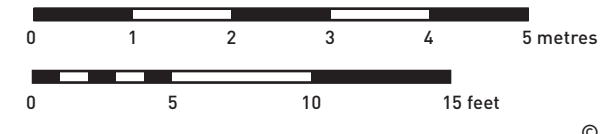


42 39 36 33 30 25 20 15 10 5 E J M P S V Y

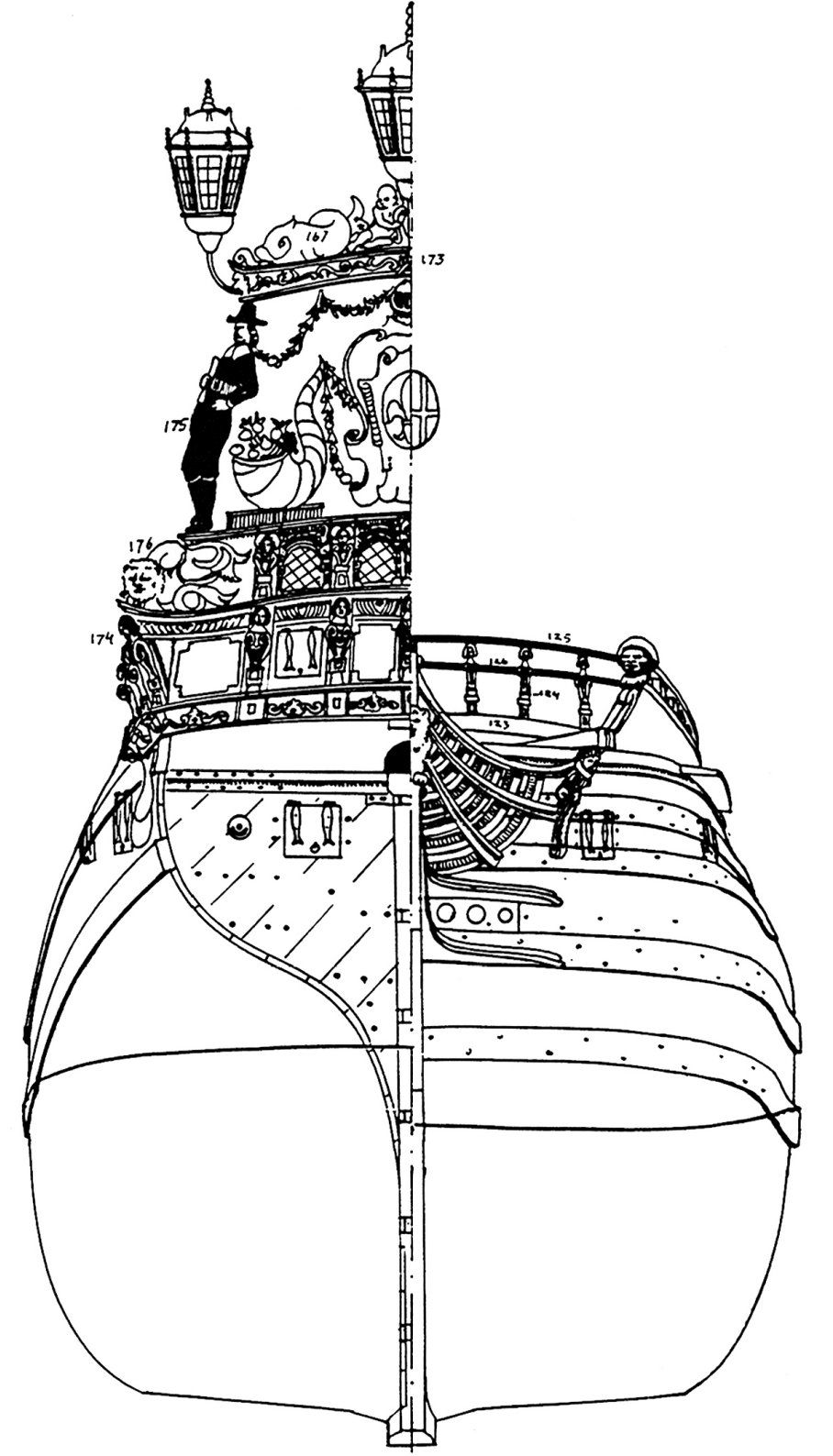
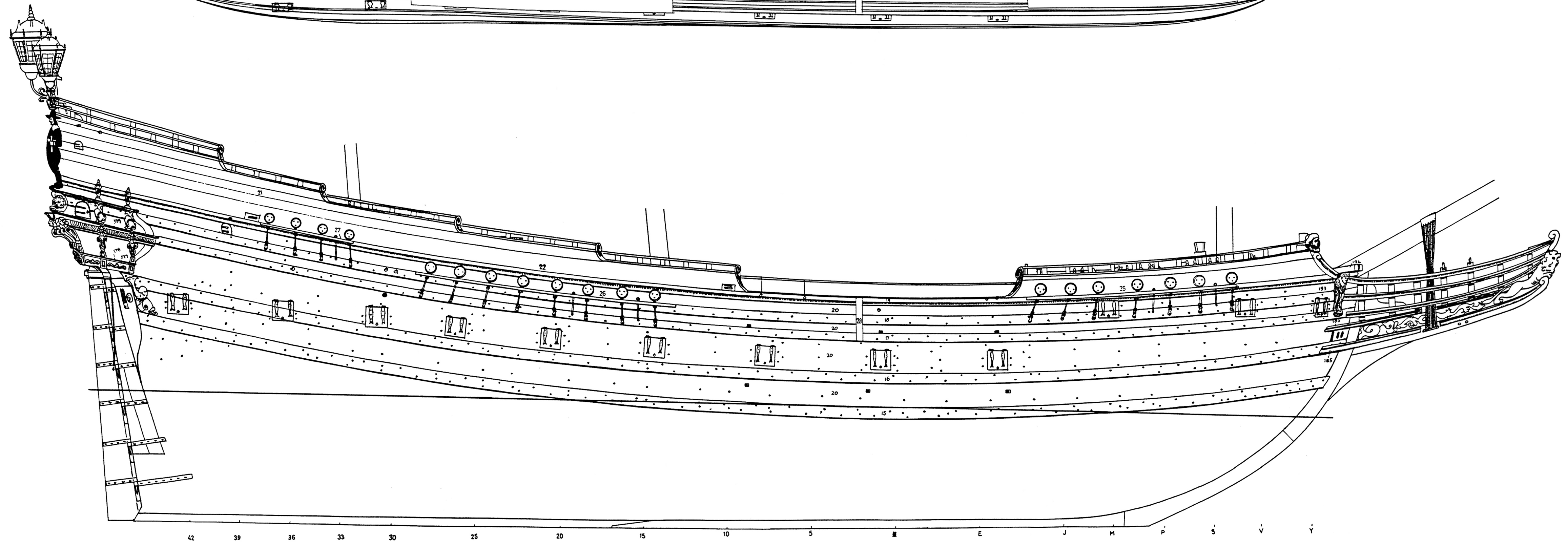
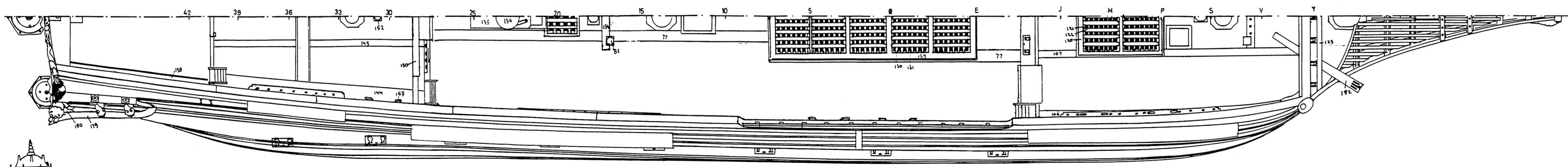


**A 134-foot Ship Drawing III - Views**

Reconstructed from  
'Aeloude en hedendaegsche Scheepsbouw en Bestier'  
by Nicolaes Witsen, 1671, chapters VII, IX, X, XI, XVII and XIX.

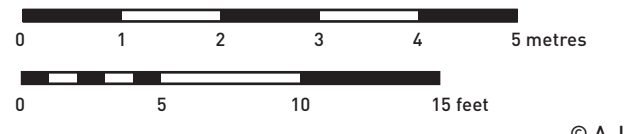


© A.J. Hoving, 1982



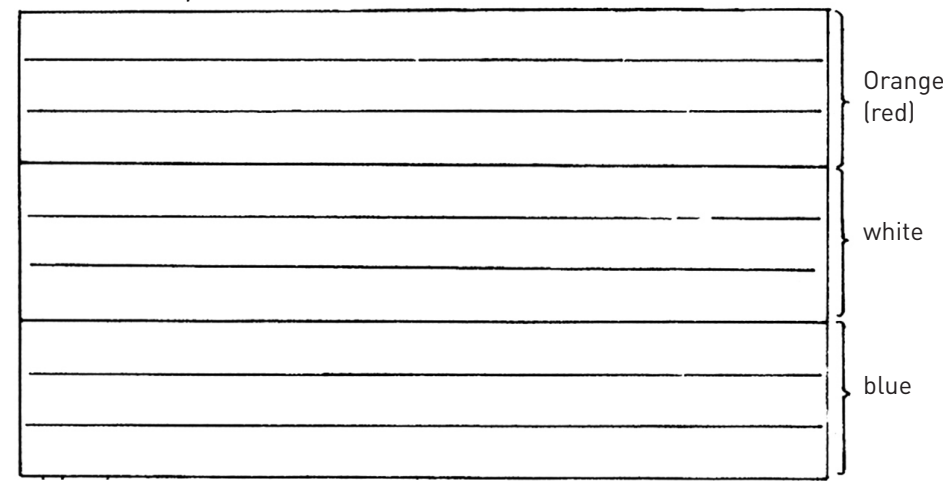


Reconstructed from  
 'Aeloude en hedendaegsche Scheepsbouw en Bestier'  
 by Nicolaes Witsen, 1671, chapters VII, IX, X, XI, XVII and XIX.

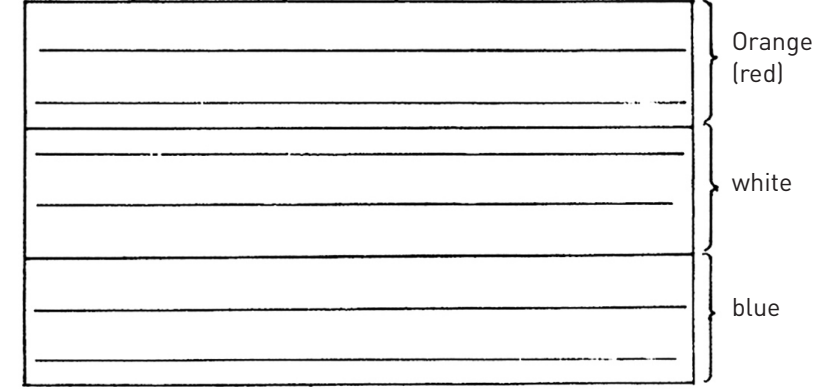


© A.J. Hoving, 1982

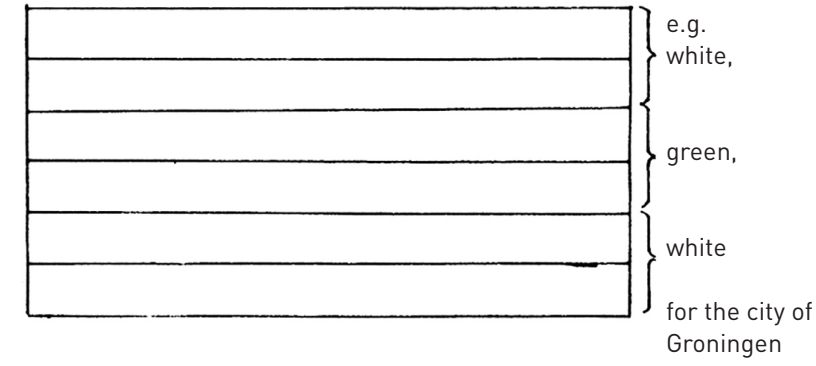
Nation flag for poop deck and main mast



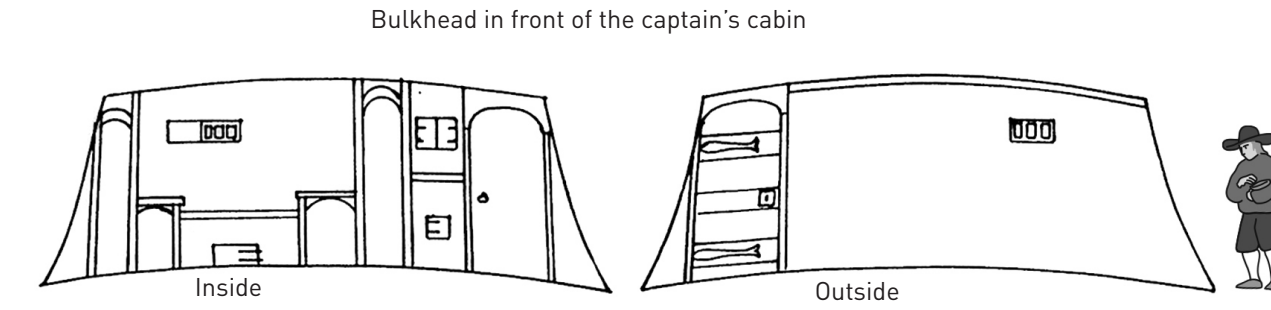
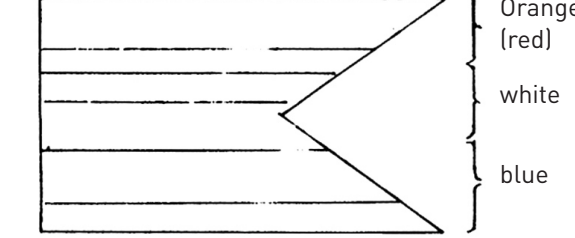
Nation flag for fore mast



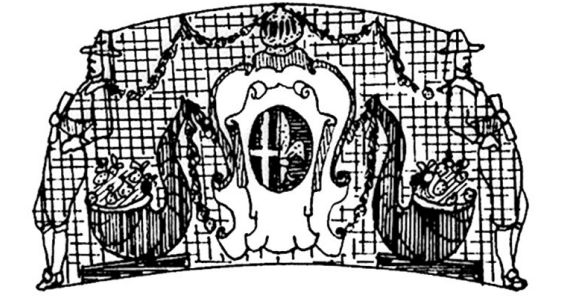
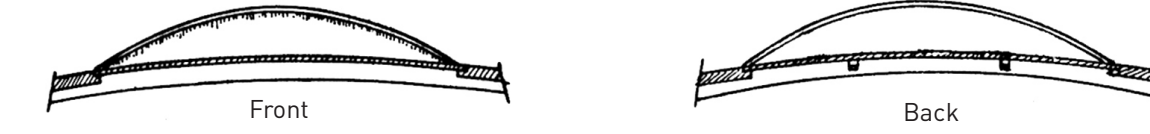
City flag for mizzen mast



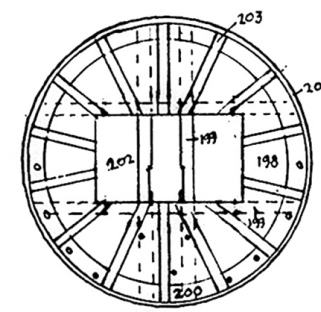
Jack for bowsprit



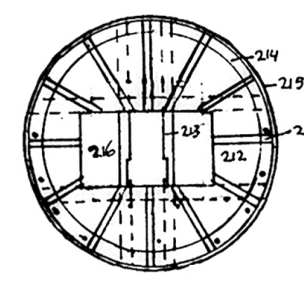
Arch over the whipstaff



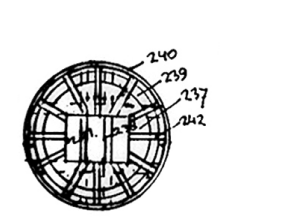
Main top



Fore top



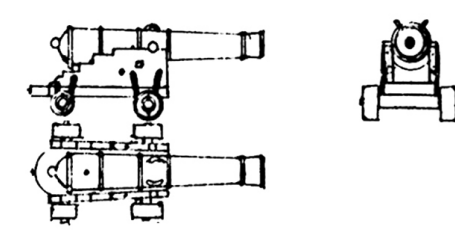
Mizzen top



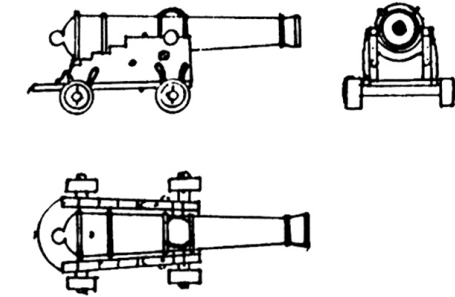
Sprit top



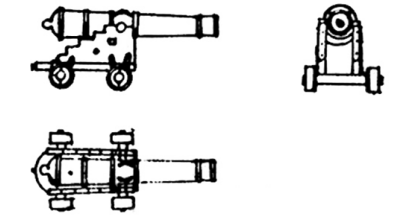
Iron 8-pounder (8)



Iron 12 pounder (4)



Iron 4-pounder (4)



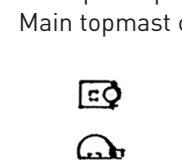
Main cap



Fore cap



Mizzen cap  
Sprit cap  
Main topmast cap



Ensign staff cap  
Fore topmast cap



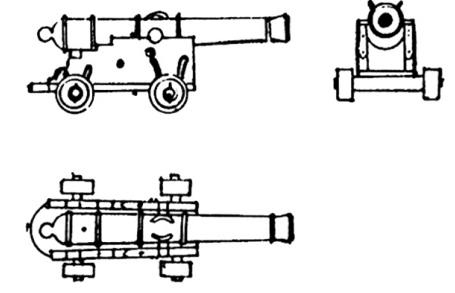
Topgallant mast cap



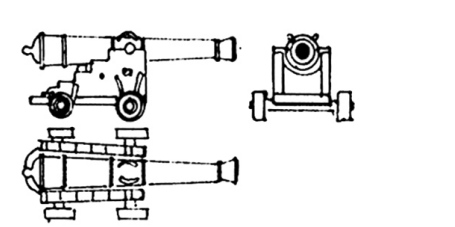
Sprit topmast cap



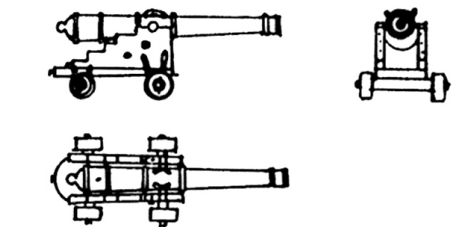
Metal home bored 12-pounder (4)



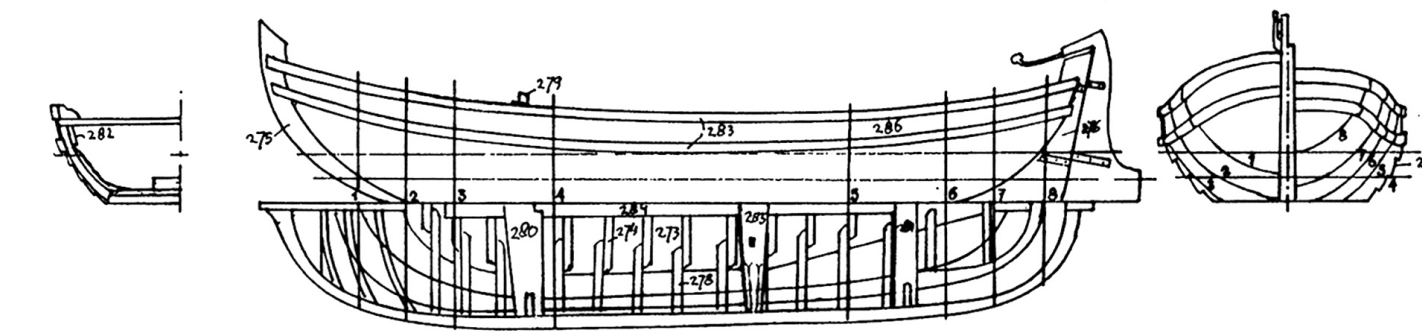
Metal taper bored 12-pounder (2)



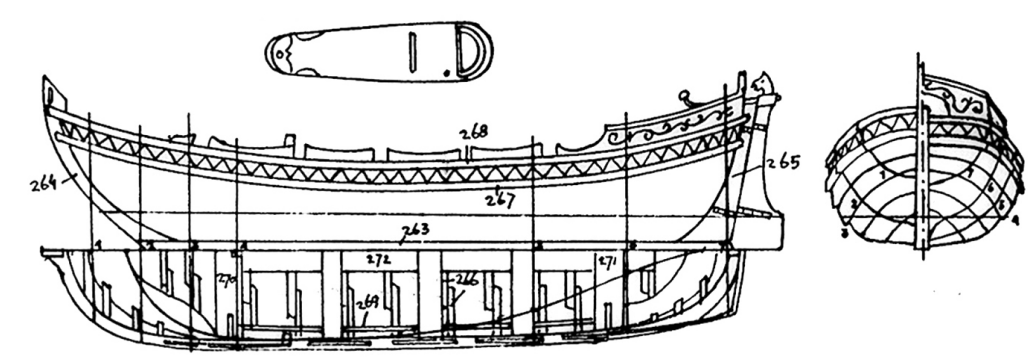
Metal 6-pounder (drake) (2)



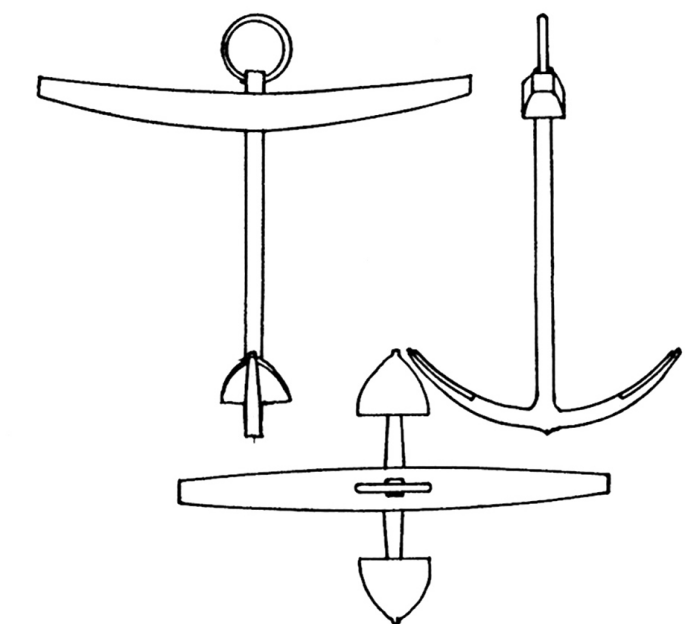
Working boat long between stem and stern 30 feet, wide 8 feet 6 inches



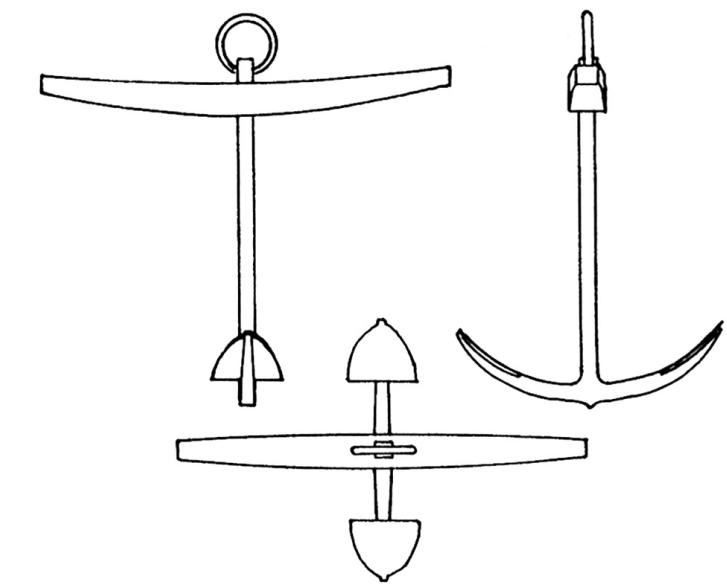
Shallop, long between stem and stern 26 feet, wide 7 feet



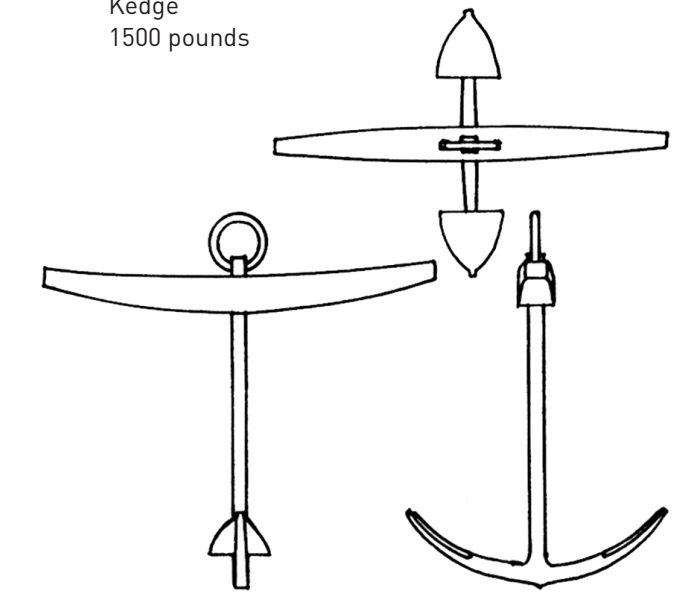
Bower  
1800 pounds



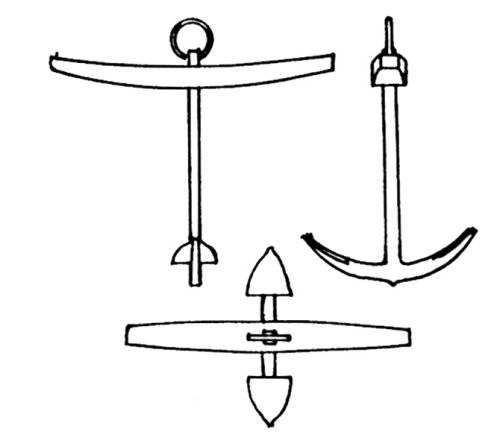
Sheet anchor  
1600 pounds



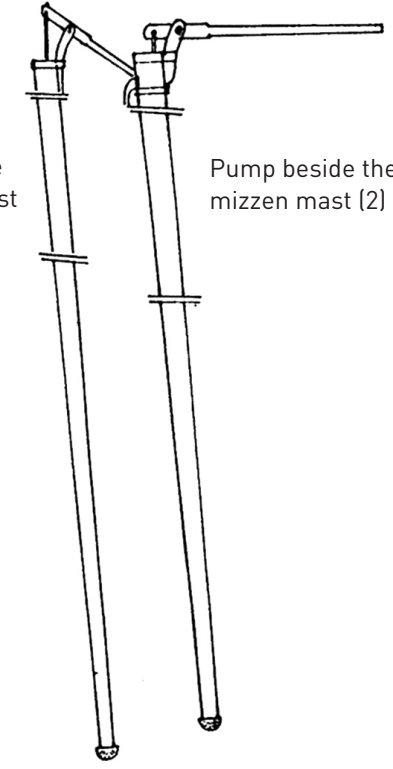
Kedge  
1500 pounds



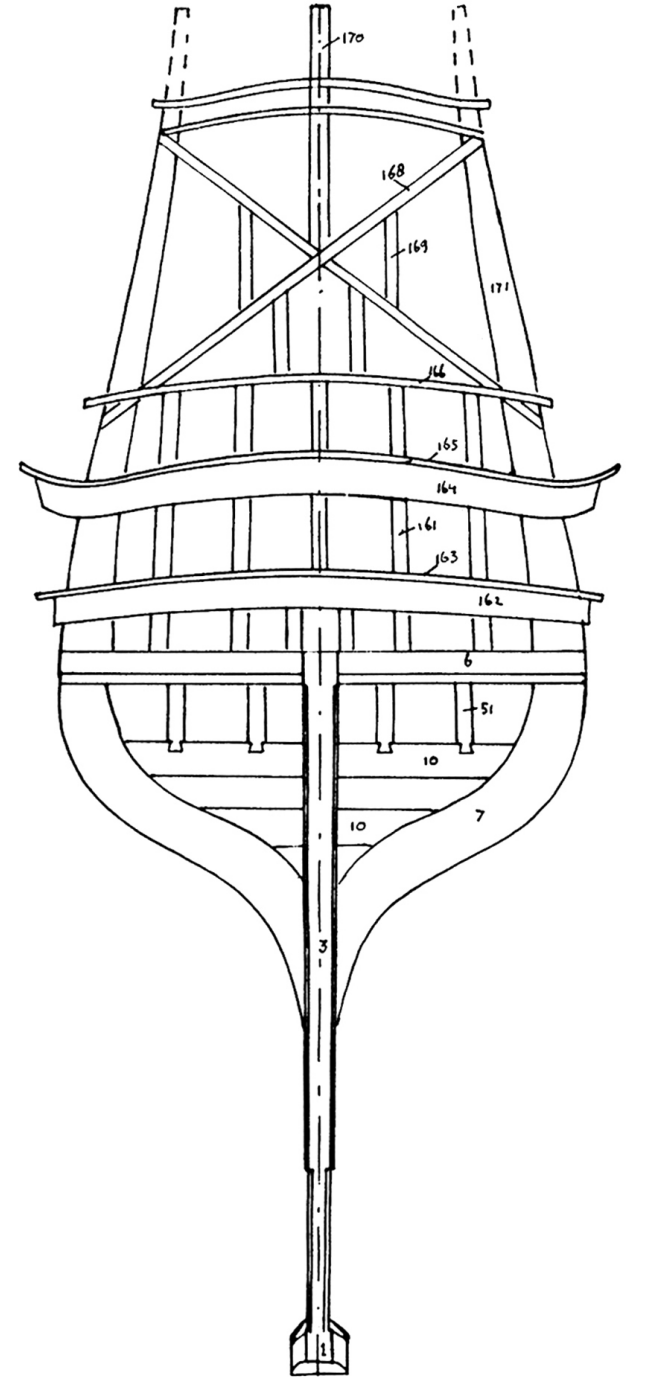
grapnel  
450 pounds



Pump beside  
the main mast



Pump beside  
the mizzen mast (2)





Reconstructed from  
'Aeloude en hedendaegsche Scheepsbouw en Bestier'  
by Nicolaes Witsen, 1671, chapters VII, IX, X, XI, XVII and XIX.

